

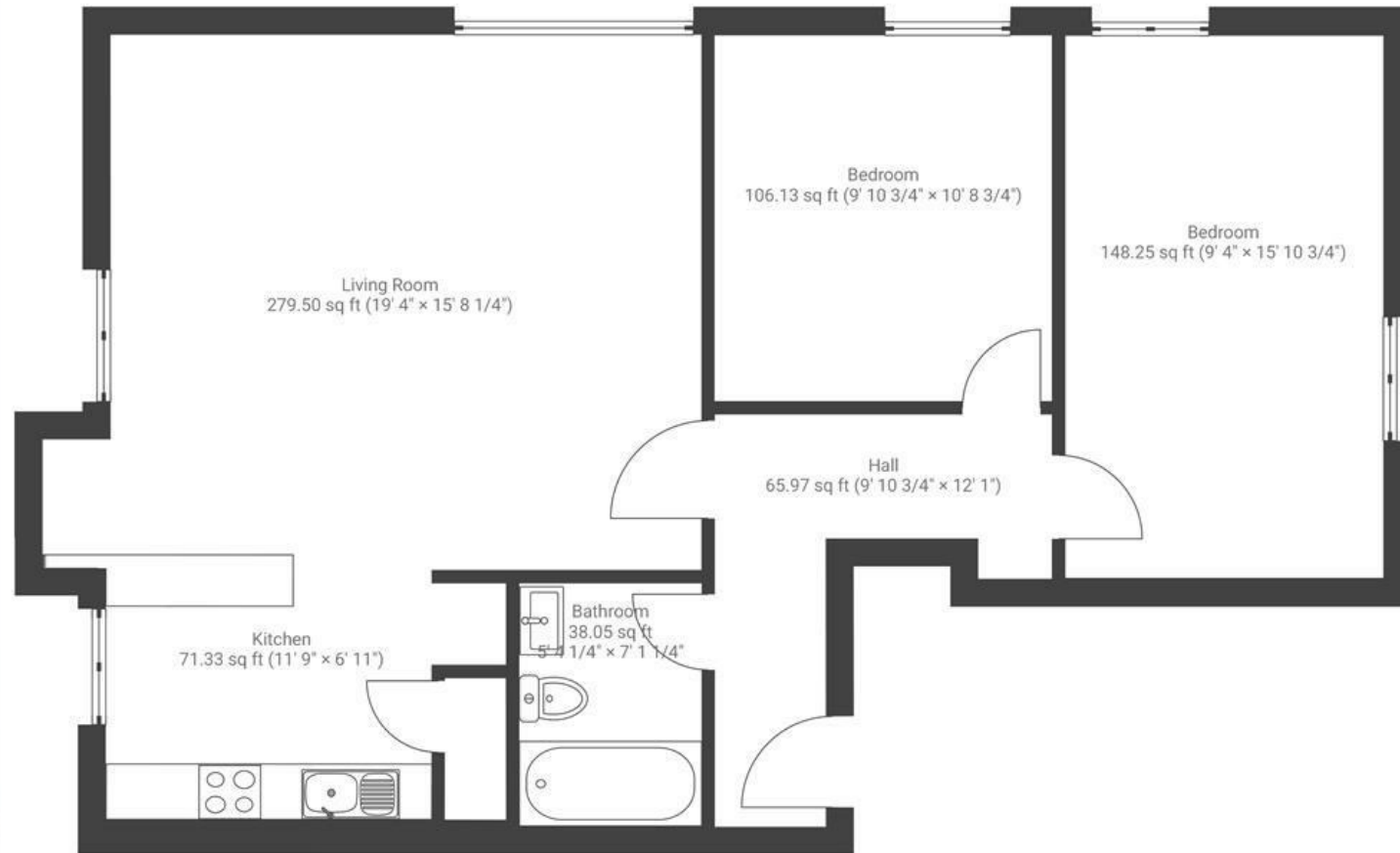
# Foye House

## LEIGH WOODS

APPROXIMATE FLOOR AREA  
69.7 SQM / 750 SQFT



### SECOND FLOOR



Boardwalk

# Bridge Road

LEIGH WOODS, BRISTOL



£350,000



2 Bedrooms



BS8 3PE



1 Bathrooms

*"I love the flat for it's great light, great location, easy access to Ashton Court, Leigh Woods and the surrounding countryside. Plus the garage and off street parking are major bonuses."*

